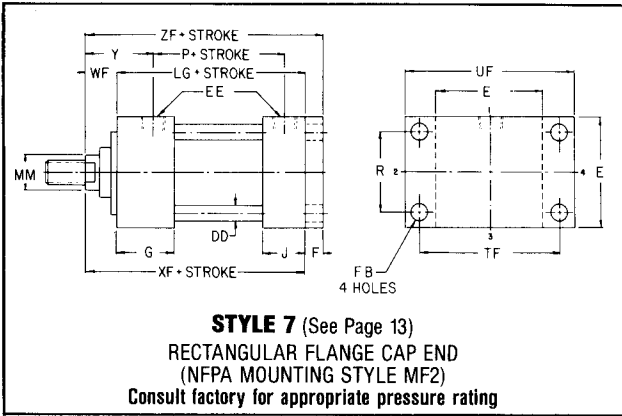
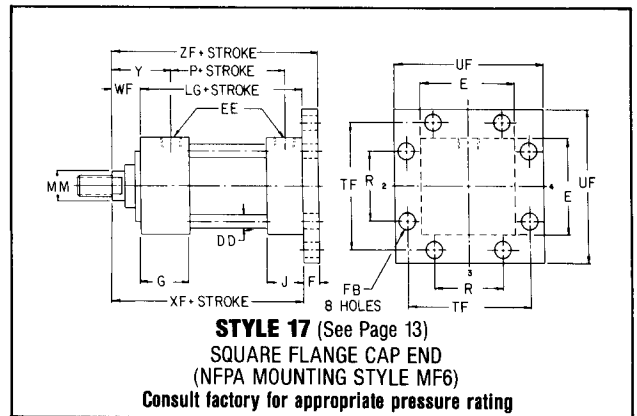




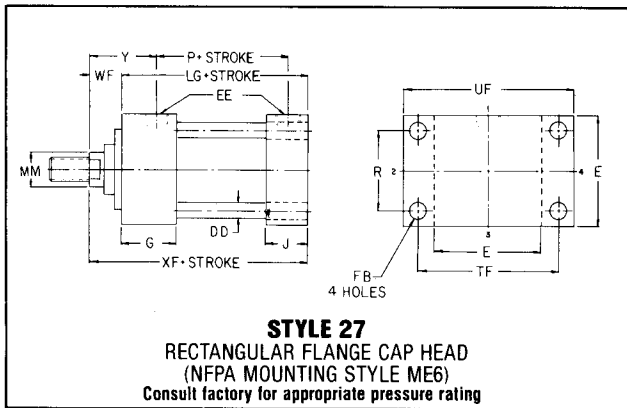
**CAP END FLANGE MOUNTED CYLINDERS
10" AND 12" BORE SERIES HP HIGH PRESSURE HYDRAULIC CYLINDERS**



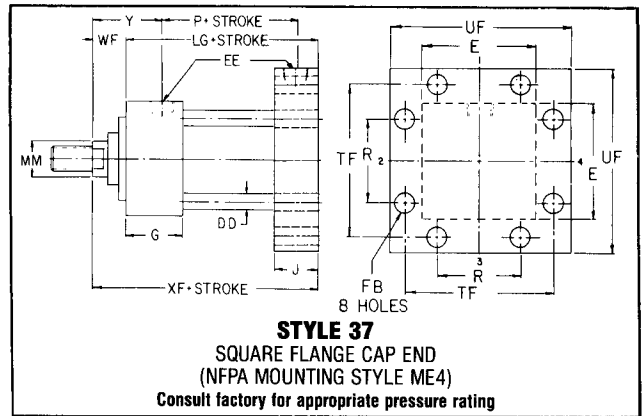
Standard Port location is Position 1.
Standard Cushion location is Position 2.



Standard Port location is Position 1.
Standard Cushion location is Position 2.



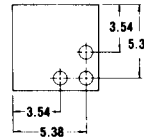
Standard Port location is Position 1.
Standard Cushion location is Position 2 Rod End and Position 3 Cap End.



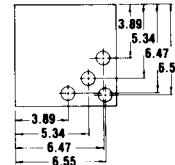
Standard Port location is Position 1.
Standard Cushion location is Position 2 Rod End and Position 3 Cap End.

TIE ROD SPACING—

10" BORE



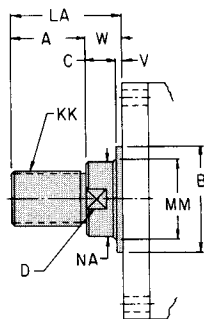
12" BORE



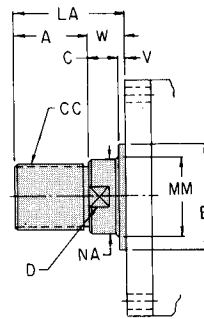
ROD END DIMENSIONS—

FOR MOUNTING STYLES 6, 16

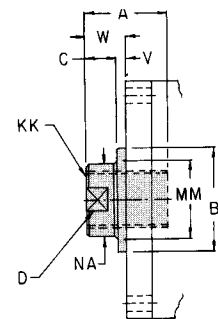
**TYPE A
STANDARD
MALE**



**TYPE D
INTERMEDIATE
MALE**

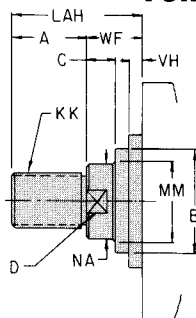


**TYPE B
FEMALE**

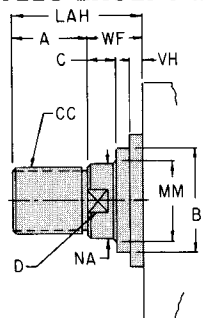


FOR ALL MOUNTING STYLES EXCEPT #6 & #16

**TYPE A
STANDARD
MALE**



**TYPE D
INTERMEDIATE
MALE**



**TYPE B
FEMALE**

