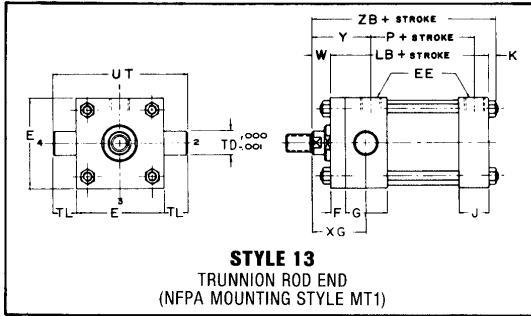
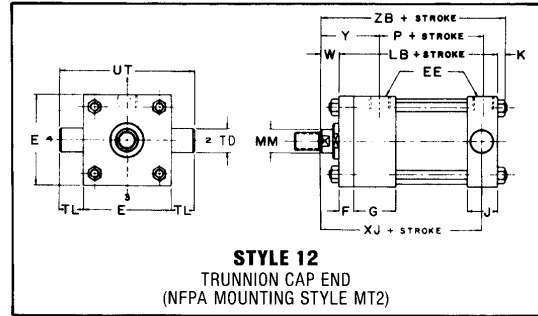




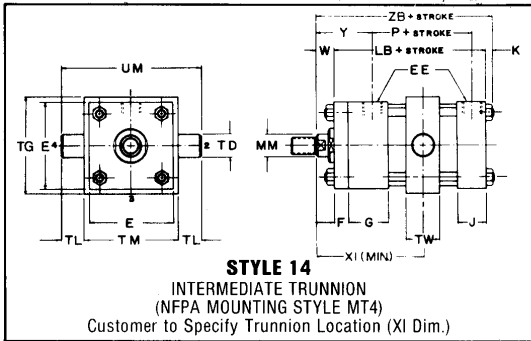
**TRUNNION AND CLEVIS MOUNTED STAINLESS STEEL  
1 1/2" TO 8" BORE, 3000 PSI RATED (MAXIMUM)  
HIGH PRESSURE HYDRAULIC CYLINDERS**



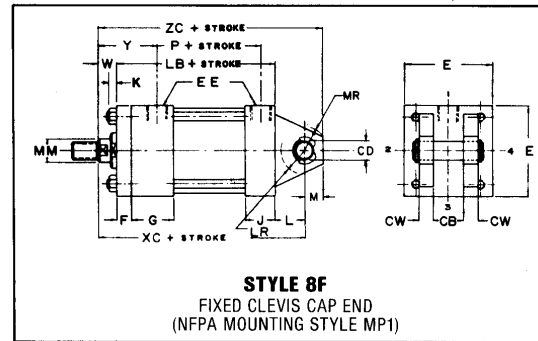
Standard Port location is Position 1.  
Standard Cushion location is Position 3 Rod End, and Position 2 Cap End.



Standard Port location is Position 1.  
Standard Cushion location is Position 2 Rod End, and Position 3 Cap End.



Standard Port location is Position 1. Standard Cushion location is Position 2.



**ENVELOPE AND MOUNTING DIMENSIONS NOT AFFECTED BY ROD DIAMETER**

BORE	CB	CD* +.001 -.001	CW	E	EE		F	G	J	K	L
					NPTF	SAE					
1 1/2	3/4	.500	1/2	2 1/2	1/2-14	10	3/8	1 3/4	1 1/2	3/8	3/4
2	1 1/4	.750	5/8	3	1/2-14	10	5/8	1 3/4	1 1/2	7/16	1 1/4
2 1/2	1 1/4	.750	5/8	3 1/2	1/2-14	10	5/8	1 3/4	1 1/2	7/16	1 1/4
3 1/4	1 1/2	1.000	3/4	4 1/2	3/4-14	12	3/4	2	1 3/4	9/16	1 1/2
4	2	1.375	1	5	3/4-14	12	7/8	2	1 3/4	9/16	2 1/8
5	2 1/2	1.750	1 1/4	6 1/2	3/4-14	12	7/8	2	1 3/4	3/4	2 1/4
6	2 1/2	2.000	1 1/4	7 1/2	1-11 1/2	16	1	2 1/4	2 1/4	7/8	2 1/2
7	3	2.500	1 1/2	8 1/2	1 1/4-11 1/2	20	1	2 3/4	2 3/4	1	3
8	3	3.000	1 1/2	9 1/2	1 1/2-11 1/2	24	1	3	3	1 1/16	3 1/4

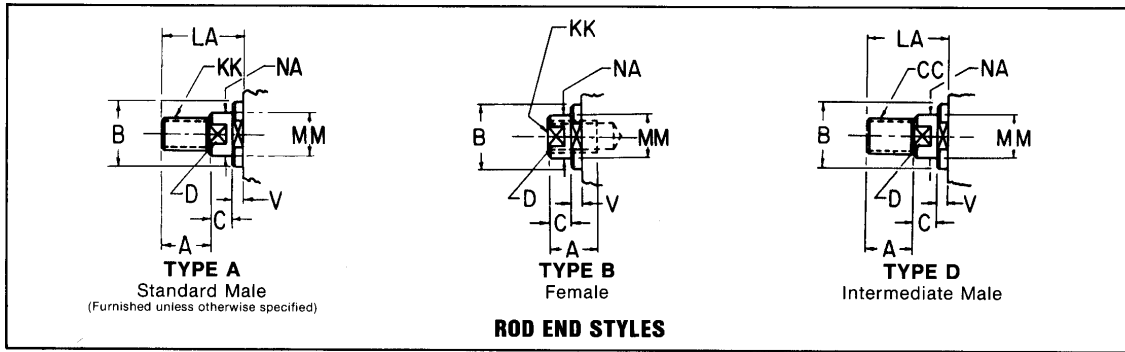
The trunnion pintles are not removable. For information on removable pintles, please consult the engineering department.

The position of the intermediate trunnion mount is not adjustable.

**NOTE:** Cylinders with #13 mounts in bores 5" thru 8" with piston rods other than standard should not be used for pressures in excess of 1500 psi. Pintles on trunnion mounted cylinders are designed to withstand shear loads, but not high bending loads. Pillow blocks must be rigidly mounted to provide full support with minimum clearances.

BORE	LR	M	MR	TD +.000 -.001	TG	TL	TM	TW	UM	UT	LB	P
											ADD STROKE	
1 1/2	5/8	1/2	11/16	1.000	2 3/4	1	3	1 1/4	5	4 1/2	5	2 7/8
2	1	3/4	15/16	1.375	3 1/4	1 3/8	3 1/2	1 1/2	6 1/4	5 3/4	5 1/4	2 7/8
2 1/2	15/16	3/4	15/16	1.375	3 3/4	1 3/8	4	1 1/2	6 3/4	6 1/4	5 3/8	3
3 1/4	1 1/4	1	1 1/4	1.750	4 3/4	1 3/4	5	2	8 1/2	8	6 1/4	3 1/2
4	1 3/4	1 3/8	1 5/8	1.750	5 1/4	1 3/4	5 1/2	2	9	8 1/2	6 5/8	3 3/4
5	2 1/16	1 3/4	2 1/8	1.750	6 3/4	1 3/4	7	2	10 1/2	10	7 1/8	4 1/4
6	2 5/16	2	2 3/8	2.000	7 3/4	2	8 1/2	3	12 1/2	11 1/2	8 3/8	4 7/8
7	2 3/4	2 1/2	2 7/8	2.500	9 1/4	2 1/2	9 3/4	3	14 3/4	13 1/2	9 1/2	5 3/8
8	3 1/4	2 3/4	3 1/8	3.000	10 1/2	3	11	3 1/2	17	15 1/2	10 1/2	6 1/8

\*CD is pin diameter.



### DIMENSIONS AFFECTED BY ROD DIAMETER

BORE	ROD DIA. MM	THREAD SIZE		ROD EXTENSIONS & PILOT DIMENSIONS							ENVELOPE DIMENSIONS							
		KK STD.	CC	A	B +.000/ -.002	C	D	LA	NA	V	W	Y	XG	XI MIN.	XC	XJ	ZB	ZC
ADD STROKE																		
1 1/2	5/8	7/16-20	1/2-20	3/4	1.124	3/8	1/2	1 3/8	9/16	1/4	5/8	2	1 7/8	3 3/8	6 3/8	4 7/8	6	6 7/8
	1*	3/4-16	7/8-14	1 1/8	1.499	1/2	7/8	2 1/8	15/16	1/2	1	2 3/8	2 1/4	3 3/4	6 3/4	5 1/4	6 3/8	7 1/4
2	1	3/4-16	7/8-14	1 1/8	1.499	1/2	7/8	1 7/8	15/16	1/4	3/4	2 3/8	2 1/4	3 7/8	7 1/4	5 1/4	6 7/16	8
	1 3/8*	1-14	1 1/4-12	1 5/8	1.499	5/8	1 1/8	2 5/8	1 5/16	3/8	1	2 5/8	2 1/2	4 1/8	7 1/2	5 1/2	6 11/16	8 1/4
2 1/2	1	3/4-16	7/8-14	1 1/8	1.499	1/2	7/8	1 7/8	15/16	1/4	3/4	2 3/8	2 1/4	3 7/8	7 3/8	5 3/8	6 9/16	8 1/8
	1 3/8	1-14	1 1/4-12	1 5/8	1.999	5/8	1 1/8	2 5/8	1 5/16	3/8	1	2 5/8	2 1/2	4 1/8	7 5/8	5 5/8	6 13/16	8 3/8
	1 3/4*	1 1/4-12	1 1/2-12	2	2.374	3/4	1 1/2	3 1/4	1 11/16	1/2	1 1/4	2 7/8	2 3/4	4 3/8	7 7/8	5 7/8	7 1/16	8 5/8
3 1/4	1 3/8	1-14	1 1/4-12	1 5/8	1.999	5/8	1 1/8	2 1/2	1 5/16	1/4	7/8	2 3/4	2 5/8	4 5/8	8 5/8	6 1/4	7 11/16	9 5/8
	1 3/4	1 1/4-12	1 1/2-12	2	2.374	3/4	1 1/2	3 1/8	1 11/16	3/8	1 1/8	3	2 7/8	4 7/8	8 7/8	6 1/2	7 15/16	9 7/8
	2	1 1/2-12	1 3/4-12	2 1/4	2.624	7/8	1 11/16	3 1/2	1 15/16	3/8	1 1/4	3 1/8	3	5	9	6 5/8	8 1/16	10
4	1 3/4	1 1/4-12	1 1/2-12	2	2.374	3/4	1 1/2	3	1 11/16	1/4	1	3	2 7/8	4 7/8	9 3/4	6 3/4	8 3/16	11 1/8
	2	1 1/2-12	1 3/4-12	2 1/4	2.624	7/8	1 11/16	3 3/8	1 15/16	1/4	1 1/8	3 1/8	3	5	9 7/8	6 7/8	8 5/16	11 1/4
	2 1/2	1 7/8-12	2 1/4-12	3	3.124	1	2 1/16	4 3/8	2 7/16	3/8	1 3/8	3 3/8	3 1/4	5 1/4	10 1/8	7 1/8	8 9/16	11 1/2
5	2	1 1/2-12	1 3/4-12	2 1/4	2.624	7/8	1 11/16	3 3/8	1 15/16	1/4	1 1/8	3 1/8	3	5	10 1/2	7 3/8	9	12 1/4
	2 1/2	1 7/8-12	2 1/4-12	3	3.124	1	2 1/16	4 3/8	2 7/16	3/8	1 3/8	3 3/8	3 1/4	5 1/4	10 3/4	7 5/8	9 1/4	12 1/2
	3	2 1/4-12	2 3/4-12	3 1/2	3.749	1	2 5/8	4 7/8	2 15/16	3/8	1 3/8	3 3/8	3 1/4	5 1/4	10 3/4	7 5/8	9 1/4	12 1/2
	3 1/2	2 1/2-12	3 1/4-12	3 1/2	4.249	1	3	4 7/8	3 7/16	3/8	1 3/8	3 3/8	3 1/4	5 1/4	10 3/4	7 5/8	9 1/4	12 1/2
6	2 1/2	1 7/8-12	2 1/4-12	3	3.124	1	2 1/16	4 1/4	2 7/16	1/4	1 1/4	3 1/2	3 3/8	6	12 1/8	8 3/8	10 1/2	14 1/8
	3	2 1/4-12	2 3/4-12	3 1/2	3.749	1	2 5/8	4 3/4	2 15/16	1/4	1 1/4	3 1/2	3 3/8	6	12 1/8	8 3/8	10 1/2	14 1/8
	3 1/2	2 1/2-12	3 1/4-12	3 1/2	4.249	1	3	4 3/4	3 7/16	1/4	1 1/4	3 1/2	3 3/8	6	12 1/8	8 3/8	10 1/2	14 1/8
7	4	3-12	3 3/4-12	4	4.749	1	3 3/8	5 1/4	3 15/16	1/4	1 1/4	3 1/2	3 3/8	6	12 1/8	8 3/8	10 1/2	14 1/8
	3	2 1/4-12	2 3/4-12	3 1/2	3.749	1	2 5/8	4 3/4	2 7/8	1/4	1 1/4	3 13/16	3 5/8	6 1/2	13 3/4	9 3/8	11 3/4	16 1/4
	3 1/2	2 1/2-12	3 1/4-12	3 1/2	4.249	1	3	4 3/4	3 3/8	1/4	1 1/4	3 13/16	3 5/8	6 1/2	13 3/4	9 3/8	11 3/4	16 1/4
	4	3-12	3 3/4-12	4	4.749	1	3 3/8	5 1/4	3 7/8	1/4	1 1/4	3 13/16	3 5/8	6 1/2	13 3/4	9 3/8	11 3/4	16 1/4
8	5	3 1/2-12	4 3/4-12	5	5.749	1	4 1/4	6 1/4	4 7/8	1/4	1 1/4	3 13/16	3 5/8	6 1/2	13 3/4	9 3/8	11 3/4	16 1/4
	3 1/2	2 1/2-12	3 1/4-12	3 1/2	4.249	1	3	4 3/4	3 3/8	1/4	1 1/4	3 15/16	3 3/4	7	15	10 1/4	12 13/16	17 3/4
	4	3-12	3 3/4-12	4	4.749	1	3 3/8	5 1/4	3 7/8	1/4	1 1/4	3 15/16	3 3/4	7	15	10 1/4	12 13/16	17 3/4
	5 1/2	4-12	5 1/4-12	5 1/2	6.249	1	4 5/8	6 3/4	5 3/8	1/4	1 1/4	3 15/16	3 3/4	7	15	10 1/4	12 13/16	17 3/4

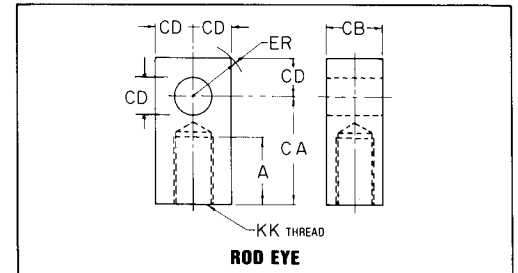
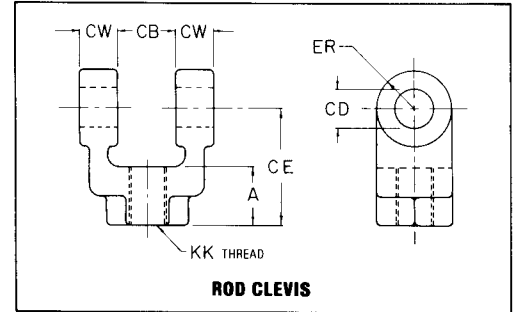
\*Rod end cushions available only as non-adjustable type- Consult Lehigh



# CYLINDER CAP AND ROD END STAINLESS STEEL MOUNTING ACCESSORIES 1 1/2" TO 8" BORE SERIES LSS® HIGH PRESSURE HYDRAULIC CYLINDERS

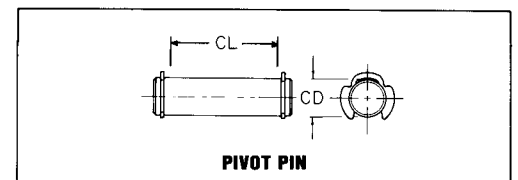
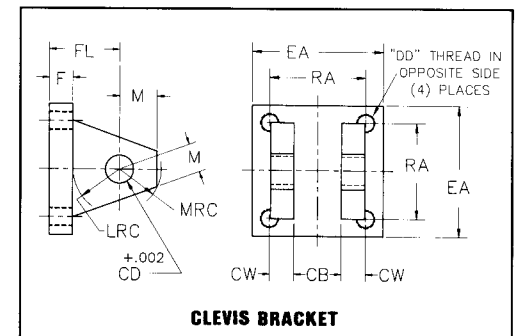
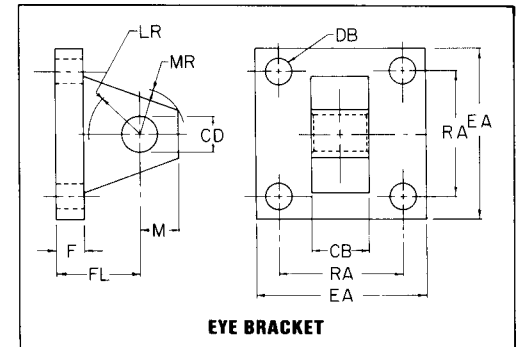
## STAINLESS STEEL ROD END ACCESSORIES

ROD THREAD SIZE (KK)	ROD CLEVIS	ROD EYE	EYE BRACKET	PIVOT PIN	CLEVIS BRACKET
7/16"—20	MACCL01S	MACRE01S	MACEB01S	MACPN01S	MACCB01S
3/4"—16	MACCL02S	MACRE02S	MACEB02S	MACPN02S	MACCB02S
1"—14	MACCL03S	MACRE03S	MACEB03S	MACPN03S	MACCB03S
1 1/4"—12	MACCL04S	MACRE04S	MACEB04S	MACPN04S	MACCB04S
1 1/2"—12	MACCL05S	MACRE05S	MACEB05S	MACPN05S	MACCB05S
1 7/8"—12	MACCL06S	MACRE06S	MACEB06S	MACPN06S	MACCB06S
2 1/4"—12	MACCL07S	MACRE07S	MACEB07S	MACPN07S	MACCB07S
2 1/2"—12	MACCL08S	MACRE08S	MACEB08S	MACPN08S	MACCB08S
3 1/4"—12	MACCL09S	MACRE09S	MACEB09S	MACPN09S	MACCB09S
4"—12	MACCL010S	MACRE010S	MACEB010S	MACPN010S	MACCB010S



## STAINLESS STEEL CAP END ACCESSORIES

CYLINDER BORE	EYE BRACKET	PIVOT PIN	CLEVIS BRACKET
1 1/2"	MACEB01S	MACPN01S	MACCB01S
2" & 2 1/2"	MACEB02S	MACPN02S	MACCB02S
3 1/4"	MACEB03S	MACPN03S	MACCB03S
4"	MACEB04S	MACPN04S	MACCB04S
5"	MACEB05S	MACPN05S	MACCB05S
6"	MACEB06S	MACPN06S	MACCB06S
7"	MACEB07S	MACPN07S	MACCB07S
8"	MACEB08S	MACPN08S	MACCB08S





**CYLINDER CAP AND ROD END STAINLESS STEEL MOUNTING ACCESSORIES  
1 1/2" TO 8" BORE SERIES LSS® HIGH PRESSURE HYDRAULIC CYLINDERS**

**STAINLESS STEEL ROD CLEVIS PART NUMBER**

	MACCL01S	MACCL02S	MACCL03S	MACCL04S	MACCL05S	MACCL06S	MACCL07S	MACCL08S	MACCL09S	MACCL010S
<b>A</b>	3/4	1 1/8	1 5/8	2	2 1/4	3	3 1/2	3 1/2	4 1/2	5 1/2
<b>CB</b>	3/4	1 1/4	1 1/2	2	2 1/2	2 1/2	3	3	4	4 1/2
<b>CD</b>	1/2	3/4	1	1 3/8	1 3/4	2	2 1/2	3	3 1/2	4
<b>CE</b>	1 1/2	2 3/8	3 1/8	4 1/8	4 1/2	5 1/2	6 1/2	6 3/4	8 1/2	10
<b>CW</b>	1/2	5/8	3/4	1	1 1/4	1 1/4	1 1/2	1 1/2	2	2 1/4
<b>ER</b>	1/2	3/4	1	1 3/8	1 3/4	2	2 1/2	3	3 1/2	4
<b>KK</b>	7/16—20	3/4—16	1—14	1 1/4—12	1 1/2—12	1 7/8—12	2 1/4—12	2 1/2—12	3 1/4—12	4—12

**STAINLESS STEEL ROD EYE PART NUMBER**

	MACRE01S	MACRE02S	MACRE03S	MACRE04S	MACRE05S	MACRE06S	MACRE07S	MACRE08S	MACRE09S	MACRE010S
<b>A</b>	3/4	1 1/8	1 5/8	2	2 1/4	3	3 1/2	3 1/2	4 1/2	5 1/2
<b>CA</b>	1 1/2	2 1/16	2 13/16	3 7/16	4	5	5 13/16	6 1/8	7 5/8	9 1/8
<b>CB</b>	3/4	1 1/4	1 1/2	2	2 1/2	2 1/2	3	3	4	4 1/2
<b>CD</b>	1/2	3/4	1	1 3/8	1 3/4	2	2 1/2	3	3 1/2	4
<b>ER</b>	9/16	27/32	1 1/8	1 1/2	1 15/16	2 3/16	2 11/16	3 1/4	3 3/4	4 1/4
<b>KK</b>	7/16—20	3/4—16	1—14	1 1/4—12	1 1/2—12	1 7/8—12	2 1/4—12	2 1/2—12	3 1/4—12	4—12

**STAINLESS STEEL EYE BRACKET PART NUMBER (MACEB) OR CLEVIS BRACKET PART NUMBER (MACCB)**

	MACCB01S	MACCB02S	MACCB03S	MACCB04S	MACCB05S	MACCB06S	MACCB07S	MACCB08S	MACCB09S	MACCB010S
	MACEB01S	MACEB02S	MACEB03S	MACEB04S	MACEB05S	MACEB06S	MACEB07S	MACEB08S	MACEB09S	MACEB010S
<b>CB</b>	3/4	1 1/4	1 1/2	2	2 1/2	2 1/2	3	3	4	4 1/2
<b>CD</b>	1/2	3/4	1	1 3/8	1 3/4	2	2 1/2	3	3 1/2	4
<b>CW</b>	1/2	5/8	3/4	1	1 1/4	1 1/4	1 1/2	1 1/2	2	2 1/4
<b>DB</b>	13/32	17/32	21/32	21/32	29/32	1 1/16	1 3/16	1 5/16	1 13/16	2 1/16
<b>DD</b>	3/8—24	1/2—20	5/8—18	5/8—18	7/8—14	1—14	1 1/8—12	1 1/4—12	1 3/4—12	2—12
<b>EA</b>	2 1/2	3 1/2	4 1/2	5	6 1/2	7 1/2	8 1/2	9 1/2	12 5/8	14 7/8
<b>F</b>	3/8	5/8	3/4	7/8	7/8	1	1	1	1 11/16	1 15/16
<b>FL</b>	1 1/8	1 7/8	2 1/4	3	3 1/8	3 1/2	4	4 1/4	5 11/16	6 7/16
<b>LR</b>	3/4	1 1/4	1 1/2	2 1/8	2 1/4	2 1/2	3	3 1/4	4	4 1/2
<b>LRC</b>	1/2	1 1/16	1 1/4	1 7/8	2	2 1/8	2 5/8	2 7/8	3 5/8	4
<b>M</b>	1/2	3/4	1	1 3/8	1 3/4	2	2 1/2	3	3 1/2	4
<b>MR</b>	9/16	7/8	1 1/4	1 5/8	2 1/8	2 7/16	3	3 1/4	3 7/8	5 1/4
<b>MRC</b>	9/16	1 1/16	1 1/8	1 3/4	1 7/8	2 1/8	2 1/2	2 3/4	3 1/2	4
<b>RA</b>	1.63	2.55	3.25	3.82	4.95	5.73	6.58	7.50	9.62	11.45

**STAINLESS STEEL PIVOT PIN PART NUMBER**

	MACPN01S	MACPN02S	MACPN03S	MACPN04S	MACPN05S	MACPN06S	MACPN07S	MACPN08S	MACPN09S	MACPN010S
<b>CD</b>	1/2	3/4	1	1 3/8	1 3/4	2	2 1/2	3	3 1/2	4
<b>CL</b>	1 3/4	2 1/2	3	4	5	5	6	6	8	9